

Sandwichbay

Sailing and Water-Ski Club

Winch Instructions

1) To use the winch the main switch in the garage must be turned on. The garage door key can be found on the key board in the clubhouse and must be returned when the garage is shut.

Main winch power switch



2) Equipment that must be used and stored in the winch box.

Protective gloves



Hand controller

Strop to link trailer to shackle

3) Connect the hand control to the plug located on the right hand side under the winch cover. The plug will only locate if aligned correctly.

Hand control plug



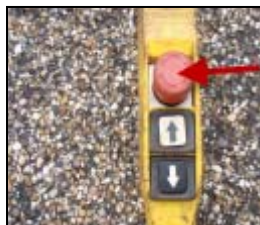
4) Turn on the power at the rear of the winch box with the GREEN button. The RED button isolates the power from the winch however the main power stays live.

The green power button



5) To activate the hand control you may have to twist the RED Emergency Stop button until it 'pops' up.

Emergency stop button



6) The hand control is now activated. When the either arrow is depressed the wire rope drum will rotate (wire rope in/out)

Wire rope outwards/down ramp
White Arrow



Wire rope inwards/up ramp
Black Arrow

7) To warn people of the wire rope, place the warning cone in the centre of the roadway

8) Pulling the shackle to keep the wire rope tight, press the white arrow button to pull out enough wire rope to reach your trailer.



Pull to keep tension in wire rope while winding out

9) Undo the shackle pin and looping the strop through a secure point on your trailer place the shackle pin through the strop. Only do the shackle pin up hand tight making sure the threaded end is flush with the outside edge of the shackle.



Make sure shackle pin is screwed in flush to shackle edge.
Do not tighten more than hand tight

DO NOT WRAP OR BEND THE WIRE ROPE AROUND ANY PART OF YOUR TRAILER OR ATTACH TO THE BOAT

10) Launching a boat is a team effort and communication between all persons is essential.

**UNDER NO CIRCUMSTANCES MUST ANYONE STAND BEHIND A BOAT BEING WINCHED.
REMOVE ANY BYSTANDERS ON THE RAMP.**

11) While lowering the boat down the ramp, the boat/trailer attendants must guide it down the ramp centrally, watching the clearance available down either side.

12) Once the boat is launched immediate trailer recovery must take place. At no time will an unattended trailer on the ramp be tolerated.

13) Before winching takes place, make sure your jockey wheel is facing the correct way otherwise it can become stuck

and shear off. This could result in the wire rope snapping with fatal consequences to those standing nearby.

14) The trailer must be accompanied and possibly steered central to the ramp while winching is taking place.

15) At this stage it is VITAL that the person controlling the winch has good communication with the person handling the trailer and is also watching that the wire rope is winding correctly onto the drum.

16) There is no reason why you cannot rewind the wire rope as in the picture, as long as the wire rope tension is kept on the drum and the person with the winch control concentrates on the job in hand.

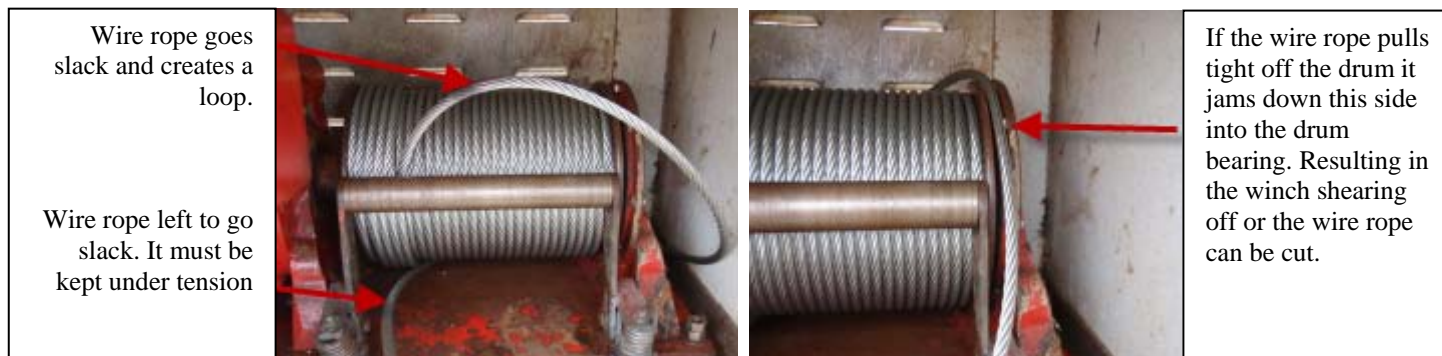


Wire rope should wind itself on straight with a little guidance from the operator.

Tension roller, that presses against the wire rope on the drum to maintain an even wind.

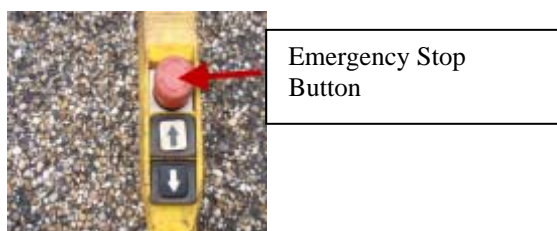
Wire rope must run under the drum

17) As the trailer makes contact with the paved surface it may roll forward a little bit. If you are not prepared for this, there is a serious risk of the wire rope looping over the edge of the drum and then snatching tight around the drum bearings. This has happened and resulted the winch almost shearing off and the wire rope getting pinched and snapping. It could be disastrous. Make sure you keep the wire rope taught at all times when the drum is rotating.



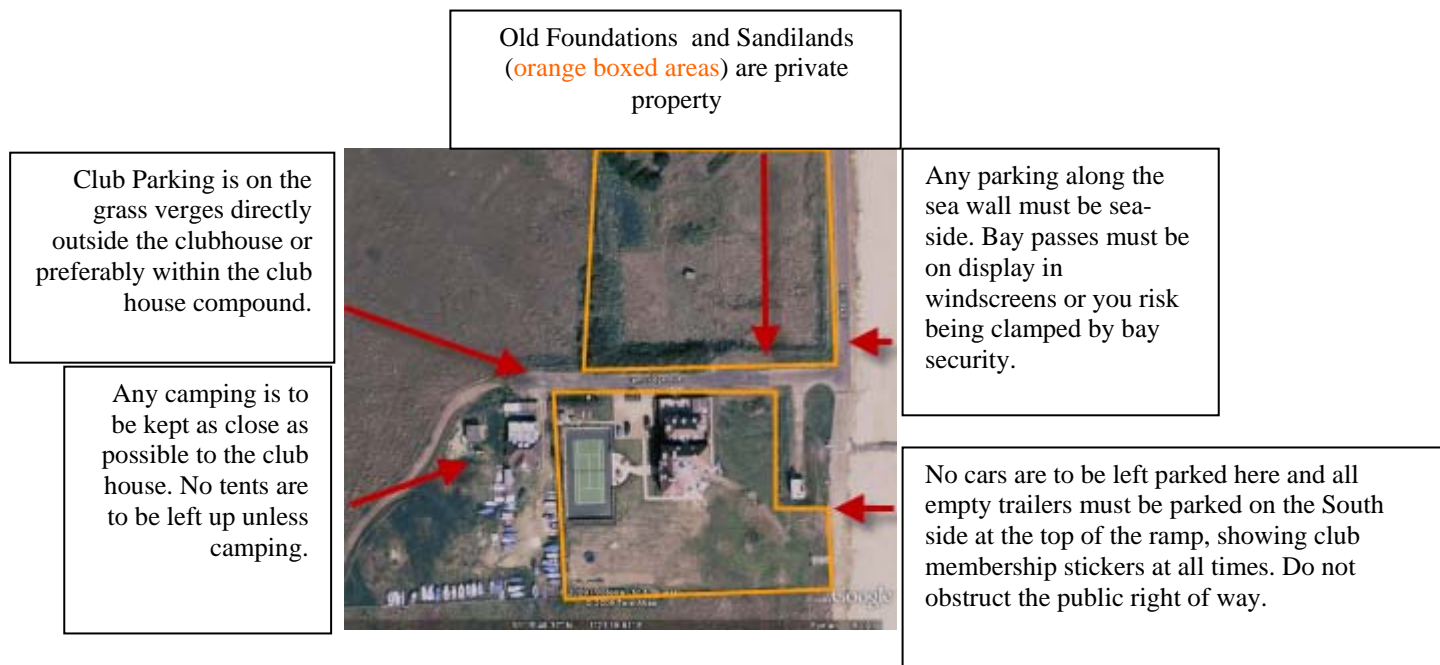
18) All empty trailers must be left on the South side of the ramp, in a safe manner and not to interfere with the public access to the sea wall. Under no circumstances are cars to be left the South side of the sea wall gate. These must be parked on the sea side of the road or outside the club house.

19) When winching operations are complete; Depress the red Emergency Stop button on the hand control and turn off the main power switch in the garage. Make sure all items are replaced in the winch box ready for use. Lock the winch box door after use.



YOU ARE REMINDED THAT ONLY PERSONS INSTRUCTED AND ASSESSED COMPETENT BY A CURRENT COMMITTEE MEMBER MAY USE THE WINCH. THIS DOES NOT INCLUDE OTHER FAMILY MEMBERS, FRIENDS AND MOST IMPORTANTLY ANYONE UNDER THE AGE OF 16. FAILURE TO COMPLY WITH THESE INSTRUCTIONS COULD RESULT IN INSTANT DISMISSAL FROM THE CLUB

Areas of Importance



Basic safety rules for Powered boats within the beach vicinity.



All powerboats must head out to sea at least 400m from this point for public safety and nuisance compliance.

North side of the ramp is often busy with families swimming therefore, all powered craft must be at dead slow or at anchor in this area.

At NO times are boats to remain within the 'mouth' of the ramp. Please be courteous with your wake when members when launching and recovering.

High speed pick up and drop off's must be done on the South side of ramp if families are using the North side.